



WalkMed®

Product Catalog



WalkMed, LLC

6555 S. Kenton Street Ste. 304, Centennial, CO 80111

PN204690J

walkmed.net

Order Toll Free: 800.578.0555



Table of Contents

WalkMed Infusion Pumps

WM 350VL	1
----------------	---

Ambulatory Bags and IV Administration Sets

65 mL Reservoir Bag	2
150 mL Reservoir Bag	2
250 mL Reservoir Bag	2
40" Set	3
60" Set	3
40" Set with 0.22 Micron Filter and Check Valve	3
66" Set with 0.22 Micron Filter	3

WalkMed Accessories

Tamper Resistant Keypad Covers	5
Tamper Resistant Reservoir Covers	5
Standard Covers	5
Disposable Carry Pouch	6
Large Carry Pouch	6
Adjustable Belt	6
Ambulatory Pump Carrying Cases & Back Pack	6
Literature	7



WalkMed 350VL Ambulatory Infusion Pump

WalkMed 350VL



Safety & Convenience

- ◆ Keypad Lock Out for Patient Protection
- ◆ Programmable Total Volume Limit & Delivery Tracking
- ◆ Auto-Occlusion Alarm Release for Sensing & Silencing Alarm

Continuous Infusions

Specifications:

Operational Highlights

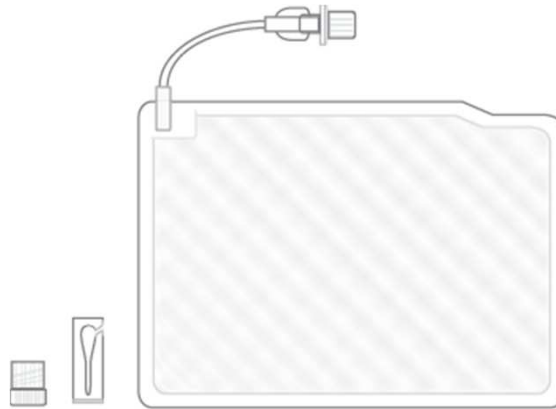
- ◆ Easy 4-step Programming
- ◆ 0.10 – 30.0 mL/hr Delivery Rates
- ◆ Compact & Durable, with 20 + years of Proven Dependability

Dimensions	4.4 x 4.0 x 1.5 in (includes front cover)
Weight	12 oz (includes battery and front cover)
Accuracy	+/- 5%
Infusion Mode	Continuous
Flow Rate	0.10 – 19.99 mL/hr (0.01 mL resolution) 20.0 – 30.0 mL/hr (0.10 mL resolution)
Total Volume Limit	1 – 1,999 mL
Reservoir Volume	65, 150, 250 mL bags (spike sets available)
Power	9 volt battery (standard)
Typical Battery Capacity	450 mL @ 1 mL/hr - 18.7 Days 650 mL @ 10 mL/hr - 2.7 Days 500 mL @ 30 mL/hr - 0.7 Days
Alarms/Alerts	System Idle, Downstream Occlusion, Low Battery Depleted Battery, Under-Delivery, Over-Delivery, Not Delivering, Data Entry Error, Clamp Bar Open, System Malfunction, End of Infusion Notice, KVO/TVL Reached



WalkMed Ambulatory Bags and IV Admin Sets

Catalog # IPR-86
65 mL Reservoir Bag



Part number: 204820

Catalog # IPR-150
150 mL Reservoir Bag



Part number: 204821

Catalog # IPR-250
250 mL Reservoir Bag



Part number: 204822

WalkMed Reservoir Bags are not made with natural rubber latex, contain less than 0.1% DEHP, & are sold 10 per case.



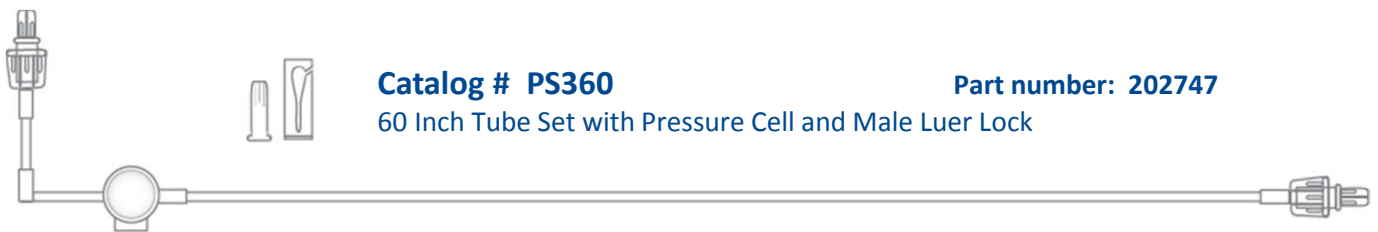
WalkMed Ambulatory Bags and Tube-Sets



Catalog # PS400/300

Part number: 202659

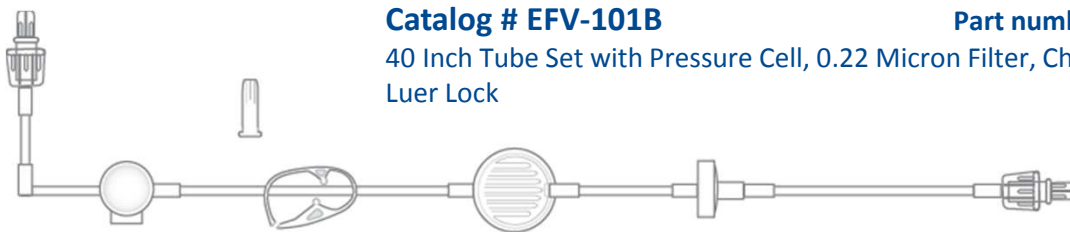
40 Inch Tube Set with Pressure Cell and Male Luer Lock



Catalog # PS360

Part number: 202747

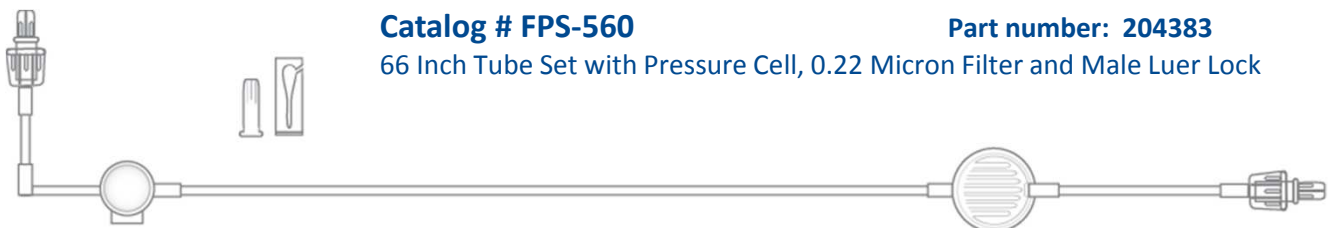
60 Inch Tube Set with Pressure Cell and Male Luer Lock



Catalog # EFV-101B

Part number: 203728

40 Inch Tube Set with Pressure Cell, 0.22 Micron Filter, Check Valve and Male Luer Lock



Catalog # FPS-560

Part number: 204383

66 Inch Tube Set with Pressure Cell, 0.22 Micron Filter and Male Luer Lock

WalkMed Ambulatory Tube Sets are not made with natural rubber latex, contain less than 0.1% DEHP, & are sold 10 per case.



WalkMed Accessories and Literature



WalkMed Keypad & Reservoir Covers

Tamper Resistant Keypad Covers

Catalog # 204813
5-Key Access

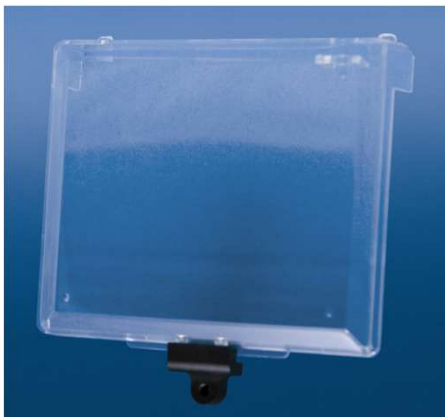


Catalog # 204839
All-Key Access



Tamper Resistant Reservoir Covers

Catalog # 204818
Small Cover



Catalog # 204819
Large Cover



Catalog # 204845 Tamper Resistant Torque Wrench Key

Catalog # 103192 Standard Keypad Cover

Catalog # 102795 Standard Small Reservoir Cover

Catalog # 204711 Standard Large Reservoir Cover



Ambulatory Pump Carrying Cases & Pouches

Disposable Carry Pouch



Catalog # 204625 – 10/case

Intended for single use, non-padded. Suitable for use with both Small and Large Reservoir Covers. Includes waist belts.

500 mL Disposable Carrying Case



Catalog # 204809

Intended for single use, non-padded. Fits up to one 1L IV bag and one WM pump; for use with larger volume deliveries. Includes shoulder strap.

Large Carry Pouch



Catalog # 204618

Intended for multiple use, padded. Suitable for use with both Small and Large Reservoir Covers. Includes shoulder strap.

1 Liter Carrying Case



Catalog # TM-C06

Intended for multiple use. Fits up to one 1L IV bag, one WM Reservoir Bag and two WM pumps; for use with larger volume deliveries. Includes shoulder strap and waist belt.

Adjustable Belt



Catalog # 204647

Suitable for use with the Large Carrying Pouch and Disposable Carrying Pouch.

Back Pack



Catalog # TM-SAB3

Intended for multiple use and large volume infusions where multiple pumps and 3L IV bags are used with a spike extension set.



WalkMed Manuals & Literature



- Catalog # 204878** WalkMed 350VL Operation Manual
- Catalog # 204637** WalkMed 350VL Clinician Quick Start Guide
- Catalog # 204638** WalkMed 350VL Patient Quick Reference Card

Notes:

WalkMed, LLC

6555 S. Kenton Street Suite 304, Centennial, CO 80111

PN204690J

walkmed.net

Order Toll Free: 800.578.0555